

N-MC-BB-R

MCP Accessory - Intelligent Manual Call Point Back Box - Red

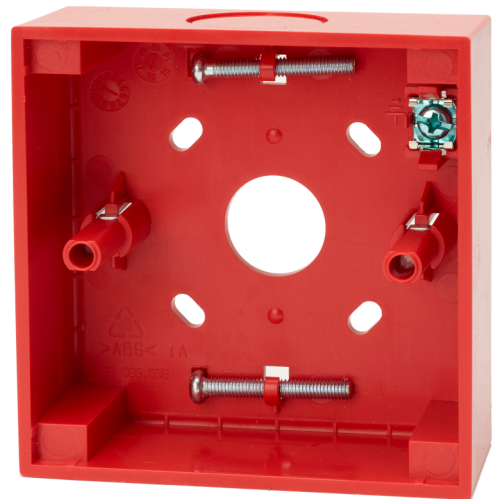
General

The N-MC-BB-R is a surface mount back-box for DM3000, KAL750 and ZP780 series manual call points. It offers cable entry from behind when used with hidden cable trunking, or cable entry from the top and bottom when surface mount cable trunking is used. Suitable mounting screws to fit the compatible manual call point to the back box are conveniently housed in the base of the box. A screen connection terminal is provided for convenient cable screen connection when used in electricity noisy environments.

Easy to Install

Adjustable screw mounting holes allows for perfect alignment of the back box even if the drilled holes are not exactly level. The flexibility of cable entry from the large opening in the rear, or the dust proof knockouts at the top and bottom of the unit greatly enhances the applications possible for fitting in all types of installations. The back box may be rotated through 180° to position the selected entry orientation in the most convenient location at the top or the bottom of the unit.

A perfect fit between the back box and the manual call point front is guaranteed by device alignment guides that avoid misalignment of the back box with the front part, presenting the manual call point as a single aesthetic product on the wall.



Details

- Compatible with quality wall boxes and MCPs
- Rear and side cable entry using a single unit
- Suitable screws provided for MCP fitting
- Screen connection terminal for electrically noisy installations
- Alignment holes for wall mounting allows for perfect horizontal alignment
- Aligns perfectly with the DM3000, KAL750 and ZP780 Series MCPs to provide a smooth aesthetic single unit finish

N-MC-BB-R

MCP Accessory - Intelligent Manual Call Point Back Box - Red

Technical specifications

General

Compatibilidad	Aritech, Kilsen, Ziton manual call points
----------------	---

Físico

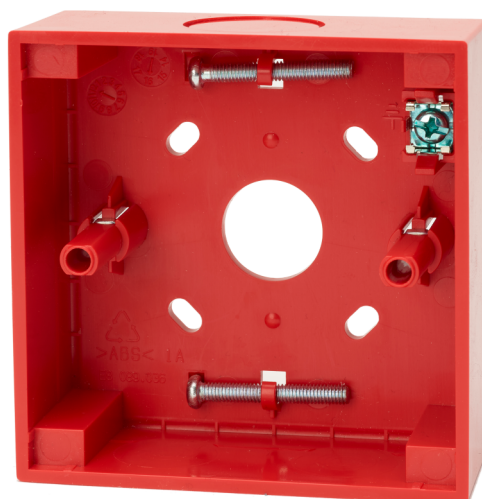
Dimensiones físicas	87.1 x 87.1 x 35 mm (W x H x D)
Peso neto	60 g
Color	Rojo (RAL 3028)
Tipo de Montaje	Montaje en pared
Entradas de cable	3 side, 1 rear
Material	Autoextinguible Noryl SE100
Terminales	1 (cable screen)

Medioambiental

Antivandálico	No
Temperatura de funcionamiento	-25 to +72°C
Temperatura de almacenamiento	-25 to +72°C
Humedad relativa	10 to 95% (noncondensing)
Entorno	Interior

Estándares y regulaciones

Cumplimiento	REACH, RoHS 2, WEEE
--------------	---------------------



As a company of innovation, UTC Fire & Security reserves the right to change product specifications without notice. For the latest product specifications, visit UTC Fire & Security online or contact your sales representative.

Last updated on 6 July 2020 - 16:14

