



Roger™ Covert 2.0

Crystal-clear digital communication to reduce the risk of mission failure.

A man in a light-colored coat and dark trousers is walking away from the camera on a city street. He is carrying a dark shoulder bag and pulling a dark rolling suitcase. The street is lined with buildings, and there are other people and vehicles in the background. The scene is captured in a cinematic style with a slightly desaturated color palette.

“over and out”

Say “over and out”
to analog

Communication is critical in
physical surveillance.

Every message must be clearly
understood by all team members
in any situation.

Say “roger”
to digital



Roger™ Covert 2.0

Roger™ Covert 2.0 is 100% digital and has been specifically designed for the highest level of intelligibility and discretion in the most challenging environments.

Only Roger™ Covert 2.0 enables crystal-clear digital communication to reduce the risk of mission failure.

Crystal-clear digital communication to reduce the risk of mission failure.

Performance

Roger™ Covert C has been designed to capture speech for maximum understanding and intelligibility even in the noisiest environments, such as sporting events or railway stations. And with connections to both a radio and mobile phone, the Roger™ Covert Dual C option offers ultimate flexibility.

Ease of use

Roger™ Covert C has been designed to be as simple to use as possible. Setup takes moments, and requires no technical knowledge. Connections between components such as earpiece and phone are seamless. And Roger™ Remote C can be used even out of sight in a pocket.

Reliability

Roger™ Covert C is completely immune to electromagnetic interference, and won't interfere with any other systems operating on similar frequencies. The system's 128-bit AES encryption guarantees secure transmissions.

Discreetness

Roger™ Earpiece C is almost invisible in the ear canal. The main Roger™ Covert C unit and remote control are small enough to disappear under clothes or in a pocket. And without a neckloop to worry about, operatives can blend in even more easily.



Why Roger™

Covert 2.0 beats analog technology of the last century

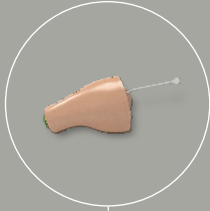
The limitation of a neckloop

Traditional analog systems use a neckloop, which emits an electromagnetic field from the source to induce a signal in the earpiece. This system is based on old technology from the last century. The problem is that agents can also hear stray electromagnetic interference (EMI) if it's present. EMI can be generated by a number of sources such as nearby dimmer switches, fluorescent lights, automobile engines, and heavy electronic equipment. That's why communication can be "muffled or broken" in surveillance operations. Neckloops are visible and can even strangle the wearer in the worst case.

The unique advantages of Roger

Roger is a technology standard developed by Phonak, which features adaptive, wireless transmission and runs on the 2.4 GHz band. Roger audio signals are digitized and packaged into very short (160 μ s) digital bursts of codes (packets) and broadcast several times, each time using different channels between 2.4000 and 2.4835 GHz. Frequency-hopping between channels, in combination with these repeated broadcasts, avoids interference issues. Phonak has developed the proprietary Roger microchip for dedicated use with miniaturized ear-level receivers. This chip contains 6.8 million transistors.

Roger™ Covert 2.0 digital system



Roger™ Earpiece C

The Roger™ Earpiece C is a masterpiece of miniaturized technology. It offers best-in-class secure audio reception on 2.4 GHz with AES-128 encryption. Discretion and a comfortable fit within the ear canal are guaranteed, thanks to its ergonomic design. It can recognize both personal and car networks as selected via the remote control and has more than 20 hours of autonomous operation.



Mini-microphone MM11

The MM11 microphone, hard-wired to the Roger™ Covert unit, offers world-beating performance in a discreet housing. This neutral-looking lapel microphone uses beam-forming and noise cancelling technology to deliver excellent voice pick-up, even in noisy conditions. Using Phonak's Digital Sound Processing it delivers perfect speech intelligibility, even when the operative is whispering.

Roger™ Covert C

The Roger™ Covert C is the central unit of the Roger™ Covert system. Its miniaturized components create a discreet, reliable and easy-to-use device that offers high-quality transmission for more than 15 hours of autonomous operations. It features a Bluetooth® interface and connects wirelessly to the Roger™ Earpiece C, Roger™ Remote C and the operative's communications device. A micro-USB socket enables charging and a headphone connection (listening only).



Roger™ Remote C / Dual C

Roger™ Remote C offers discreet, neutral, push-to-talk (PTT) functionality designed to avoid unwanted triggering. Besides PTT functionality, the operative can mute and adjust the volume of the Roger Earpiece C, accept, end and reject telephone phone calls, send covert 'beep' signals to the network, and switch between personal and car systems. The Roger™ Remote Dual C version also allows temporary priority switching between radio and mobile phone.



The Roger™ Covert Dual C separable radio offers the same features as the Roger™ Covert C with the addition of a detachable wired radio lead, allowing both a radio and a Bluetooth® enabled mobile phone source to be connected.



Roger™ CarKit C

The Roger™ CarKit C is an easy-to-fit transmitter that sends an encrypted audio signal from the vehicle's radio installation directly to the Roger™ Earpiece C.

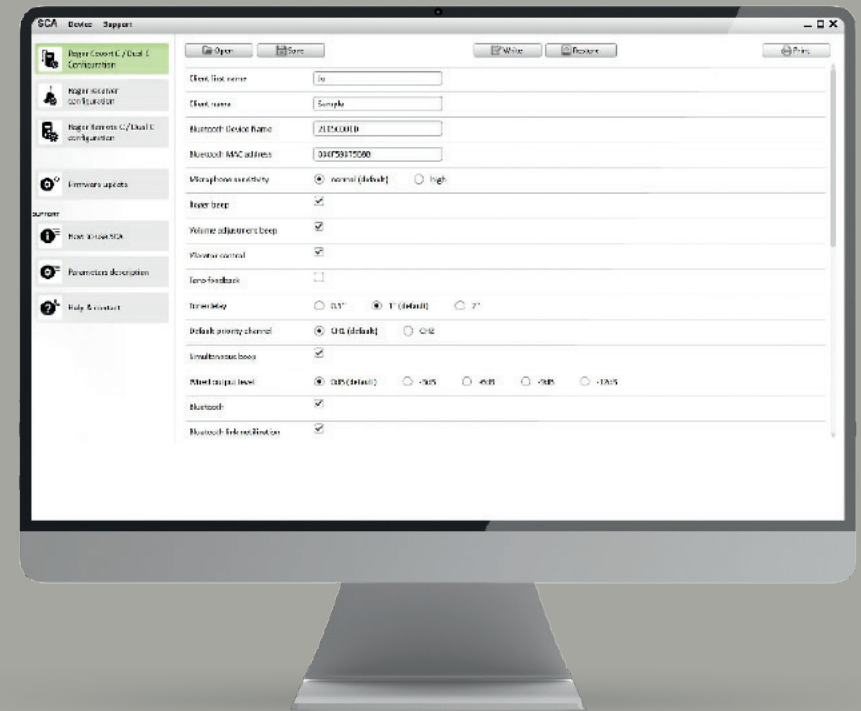
Compatibility to communication devices

Roger™ Covert offers compatibility, wired or Bluetooth®, to most popular professional police radios, POC and mobile phones. Mobile phones can be used for phone calls or for a Walkie-Talkie App.



Roger Covert C can handle one Bluetooth® link while Roger Covert Dual C separable radio can handle simultaneously one Bluetooth® link and one wired link.

Future-proof and as individual as your mission



SCA – Security Configuration App

SCA is a MS-Windows App that allows to configure your Roger™ Covert System. You can activate or deactivate several functions and notifications, or give a name to your Roger Covert system.

In addition, Roger™ Covert is always evolving to follow the requirements of new communication devices. Therefore, in case of new compatibility or functionality, you can easily upgrade your device using SCA.

About us

Since 1992 we have helped professionals to communicate effectively in challenging environments. Thanks to our close collaboration with end users to develop solutions that perfectly meet their needs, our miniaturized wireless earpieces, headsets and professional hearing protection devices are used and trusted by demanding customers around the world.

Based in Murten in one of Switzerland's first zero energy office buildings, Sonova Communications (formerly Phonak Communications) is a member of Sonova Group, a leading provider of innovative hearing care solutions.

www.phonak-communications.com