

## RADWIN 5000 – HPMP

### RW-5510-2350 Subscriber Unit – Data Sheet



#### HSU 510 SERIES

#### Subscriber Units - RW-5510-2350

RADWIN RW-5510-2350 Subscriber Unit (HSU) provides high capacity access connectivity of up to 10Mbps net aggregate throughput.

RW-5510-2350 works with HBS-5200 base station.

RW-5510-2350 supports 5.X GHz and complies with ETSI regulations.

#### Product Highlights

- Up to 10 Mbps net aggregate throughput
- Guaranteed Service level Agreement (SLA) per HSU
- Outstanding short and constant latency
- Long range – up to 40 km/25 miles
- Advanced MIMO, OFDM and Diversity technologies
- Excellent operation in nLOS and NLOS scenarios
- Ease of operation and maintenance

**RADWIN**

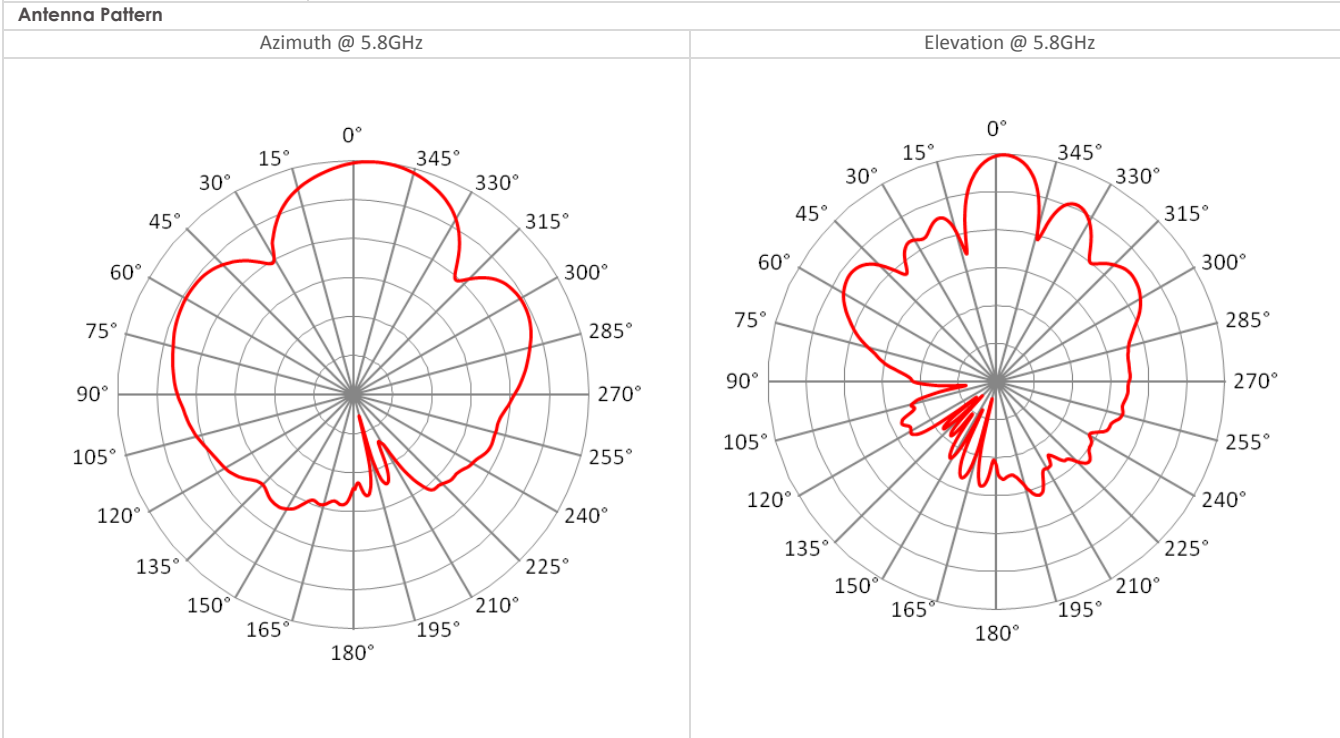
## RW-5510-2350 - Product Specifications

<b>CONFIGURATION</b>	
Architecture	Outdoor Unit Connectorized for External Antenna with small form factor antenna
PoE to ODU Interface	Outdoor CAT-5e cable; Maximum cable length: 100 m
<b>RADIO</b>	
Capacity net aggregate throughput	10 Mbps
Range	Up to 40 km / 25 miles
Channel Bandwidth	Configurable: 10, 20 and 40 MHz (*)
Modulation	2x2 MIMO-OFDM (BPSK/QPSK/16QAM/64QAM)
Bandwidth allocation	Symmetric and Asymmetric
Adaptive Modulation & Coding	Supported
DFS	Supported
Diversity	Supported
Spectrum Viewer	Supported
Max Tx Power	25 dBm (*)
Duplex Technology	TDD
Error Correction	FEC k = 1/2, 2/3, 3/4, 5/6
Encryption	AES 128
Supported Indoor Units	RADWIN PoE device (RW-9921-001X)
Ethernet Interface	10/100 BaseT
Layer 2	Hub Mode
QoS	Supported Packet classification to 4 queues according to 802.1p and Diffserv
VLAN	Supported 802.1Q, 8021.P, QinQ

Note (\*) - Subject to regulation in each country

<b>SUPPORTED BANDS RW-5510-2350</b>		
5.4 GHz ETSI*	5.475 - 5.720 GHz	ETSI EN 301 893
5.8 GHz ETSI	5.725 - 5.875 GHz	ETSI EN 302 502
5.3 GHz ETSI	5.150 - 5.350 GHz	ETSI EN 301 893
*Default Band		
<b>MECHANICAL</b>		
ODU Dimensions	19.5(w) x 27.0(h) x 9.0(d) cm	
ODU Weight	1.8 kg / 3.6 lbs	
<b>POWER</b>		
Power Feeding	Power provided over ODU-IDU cable using PoE	
Power Consumption	<20W	
<b>ENVIRONMENTAL</b>		
Operating Temperatures	-35°C to 60°C / -31°F to 140°F	
Humidity	100% condensing, IP67 (totally protected against dust and against immersion up to 1m)	
<b>SAFETY</b>		
FCC/IC (cTUVus)	UL 60950-1, UL 60950-22, CAN/CSA C22.2 60950-1, CAN/CSA C22.2 60950-22	
ETSI	EN/IEC 60950-1, EN/IEC 60950-22	
<b>EMC</b>		
FCC	47 CFR Class B, Part15, Subpart B	
ETSI	EN 300 386, EN 301 489-1, EN 301 489-4	
CAN/CSA-CEI/IEC	CISPR 22-04 Class B	
AS/NZS	CISPR 22-2004 Class B	

Integrated Antenna	
Gain	15.0 ± 1.0 dBi @ 5.15-5.47 GHz 15.5 ± 1.0 dBi @ 5.47-5.875 GHz
VSWR	1.5 : 1 (typ) 2 : 1(max)
Azimuth 3 dB Beamwidth	35° (typ)
Elevation 3 dB Beamwidth	15° (typ)
AZ & EL Beam Squint	± 2.5° Port V & Port H
Polarization	Dual Linear (Vertical and Horizontal)
Sidelobes Level	ETSI EN 302 085 V1.1.2, TS1-TS3
Cross Polarization	ETSI EN 302 085 V1.1.2, TS1-TS3
F/B Ratio	-20 dB (max)
Port To Port Isolation	40 dB (min)
Lightning Protection	DC grounded



## Ordering Info

**Part Number:** RW-5510-2350

**Description:** RADWIN HSU 510 Series Subscriber Unit Radio with small-form-factor integrated antenna and Connectorized for external antenna (2xN-type), supporting multi frequency bands at 5.x GHz, factory default 5.4 GHz ETSI

**Corporate Headquarters,** T. +972.3.766.2900, E. sales@radwin.com, www.radwin.com

The RADWIN name is a registered trademark of RADWIN Ltd.

© All rights reserved, August 2011 DS RW-5510-2350/08.11, Software Release 3.2

**RADWIN**